

COMPLETE PLANT CLOSURE OF WORLD CLASS CHAIN & IDLER MANUFACTURER

**TUESDAY, JULY 30TH
AT 11:00 AM ET (10:00 AM CT)
MILWAUKEE, WISCONSIN**

**REGISTER NOW:
BidSpotter**

LATE MODEL CNC MACHINING AND FABRICATING EQUIPMENT – FEATURING 2019 MESSER METALMASTER XCEL PLASMA CUTTING TABLE, MAZAK HCN-6800-II CNC HORIZONTAL MACHINING CELL, MINSTER E2.600.60.40 & MINSTER E2.300.60.36 PRESSES, PRESS FEED EQUIPMENT, HEAT TREAT FURNACE, AMADA BAND SAW, BATCH TYPE TUMBLAST, (2) NARROW ISLE COMBI-LIFTS, WELDERS, AIR COMPRESSORS, OVER 100 LISTA CABINETS, OVER 500 SECTIONS OF PALLET RACKING, TOOLROOM, PLANT SUPPORT AND MORE! OVER 400,000 SF FACILITY!



2019
**MESSER METALMASTER XCEL
8' X 45' CUTTING AREA
PLASMA CUTTING SYSTEM**



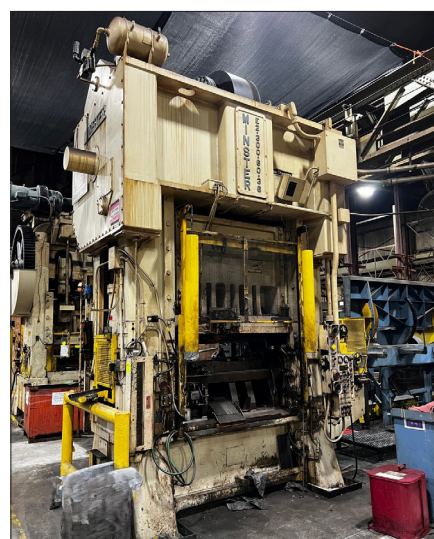
2019
**INDUSTRIAL MAGNETICS (IMI)
MAGNETIC PLATE LIFTER**



2009
**MAZAK HORIZONTAL MACHINING
CELL CONSISTING OF (2) MAZAK
HCN-6800-II CNC HORIZONTAL
MACHINING CENTERS**



**MINSTER
E2.600.60.40 PRESS**



**MINSTER
E2.300.60.36 PRESS**



**BROWN & SHARPE 7.10.7
COORDINATE MEASURING
MACHINE**



**NIAGARA METAL
FINISHERS TEMPER
FURNACE**



**WHEELABRATOR
22-SUPER BATCH TYPE
TUMBLAST**



AMADA BAND SAW



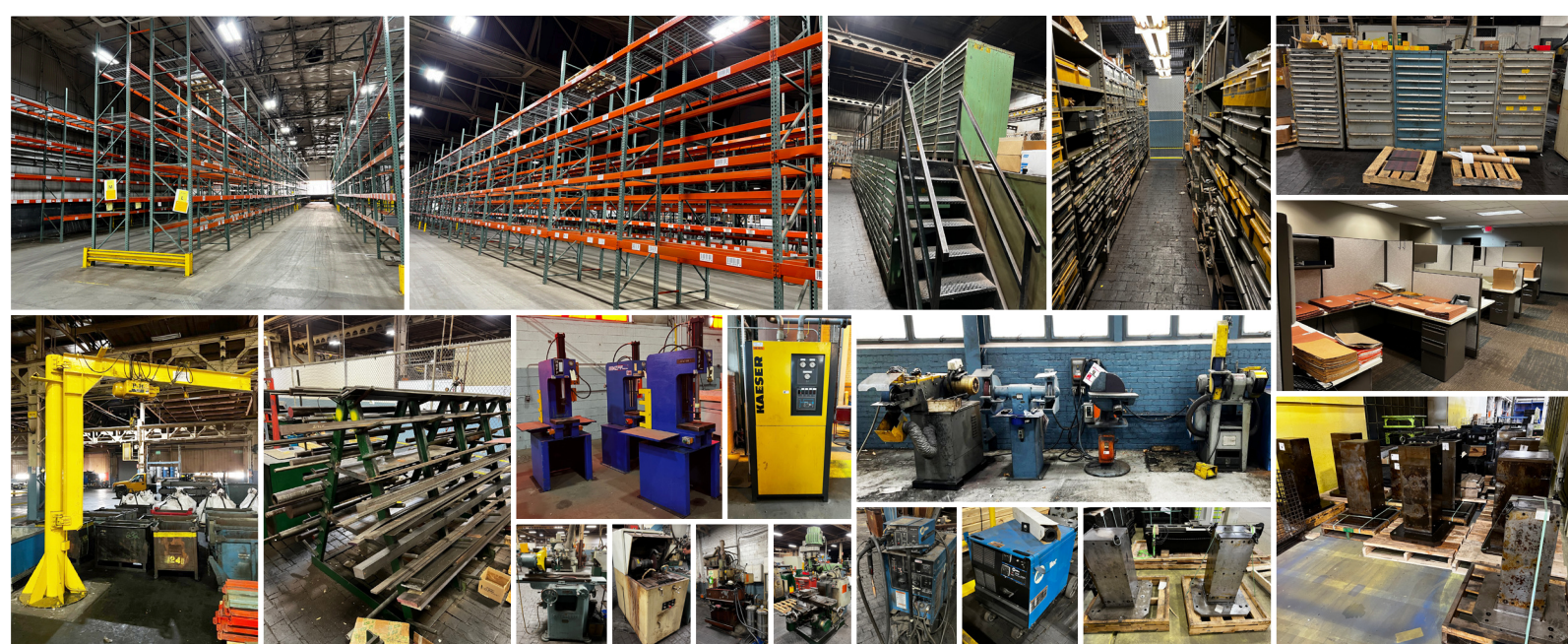
**1 OF 2
NARROW ISLE
COMBI-LIFTS**



**INGERSOLL RAND
AIR COMPRESSOR**



**SROKA ELECTRIC
DIE HANDLER**



VIEW AUCTION & REGISTER NOW!

DATE: TUESDAY, JULY 30 AT 11:00 AM ET (10:00 AM CT)

LOCATION: MILWAUKEE, WISCONSIN

INSPECTION: BY APPOINTMENT

ADD AUCTION TO CALENDAR:



CONTACT JR KRAEMER FOR MORE INFORMATION

JR@Wismet.com | 262-548-6080



**WISCONSIN
METALWORKING
MACHINERY INC.**

IN CONJUNCTION WITH:

